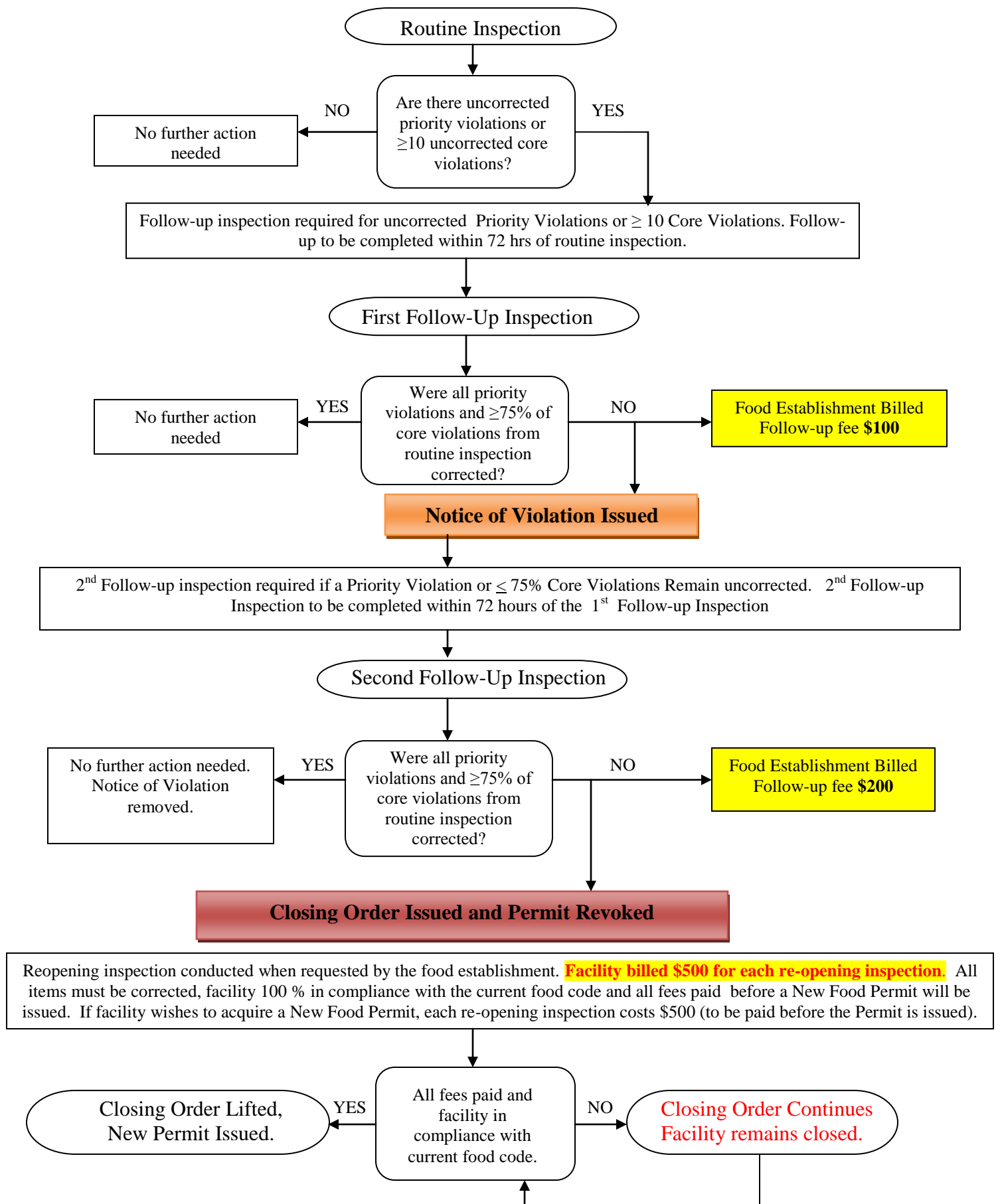


**FOOD ESTABLISHMENT INSPECTION PROCESS AND FOLLOWUP INSPECTION FEES**



No further action needed

Routine Inspection

Are there uncorrected priority violations or  $\geq 10$  uncorrected core violations?

NO

YES

Follow-up inspection required for uncorrected Priority Violations or  $\geq 10$  Core Violations. Follow-up to be completed within 72 hrs of routine inspection.

First Follow-Up Inspection

No further action needed

Were all priority violations and  $\geq 75\%$  of core violations from routine inspection corrected?

YES

NO

Food Establishment Billed Follow-up fee \$100

Notice of Violation Issued

2<sup>nd</sup> Follow-up inspection required if a Priority Violation or  $\leq 75\%$  Core Violations Remain uncorrected. 2<sup>nd</sup> Follow-up Inspection to be completed within 72 hours of the 1<sup>st</sup> Follow-up Inspection

Second Follow-Up Inspection

No further action needed. Notice of Violation removed.

Were all priority violations and  $\geq 75\%$  of core violations from routine inspection corrected?

YES

NO

Food Establishment Billed Follow-up fee \$200

Closing Order Issued and Permit Revoked

Reopening inspection conducted when requested by the food establishment. **Facility billed \$500 for each re-opening inspection.** All items must be corrected, facility 100 % in compliance with the current food code and all fees paid before a New Food Permit will be issued. If facility wishes to acquire a New Food Permit, each re-opening inspection costs \$500 (to be paid before the Permit is issued).

Closing Order Lifted, New Permit Issued.

All fees paid and facility in compliance with current food code.

YES

NO

Closing Order Continues Facility remains closed.